



2026-27 High School Course Catalogue

Table of Contents

Sask DLC Learning Models	3
High School Courses	4
French Immersion	34
Specialized Program Credits	37
English as an Additional Language	39
Modified Courses	41
Synchronous Live Class Schedule	44

Sask DLC Learning Models

To best support student learning, Sask DLC offers three distinct learning models - Synchronous Live Class, Asynchronous and Guided Learning.

Each learning model has distinct benefits that suit the course offering and may appeal to your learning style or to your personal schedule and other responsibilities.

Synchronous Live Class provides you with the most structure and interaction with your teacher and peers. You will attend daily live classes instructed by a teacher in a regularly scheduled period of the day. You can access their course materials online 24/7 and are able to connect with your teacher outside of class time, as needed. The registration deadline for Synchronous Live classes is five days after the beginning of the semester.

Most core grad requirement courses are offered synchronously, as well as Modified and English as an Additional Language courses. A listing of the Synchronous Live Classes and their scheduled times [can be found on the Sask DLC webpage](#) or at the back of this course catalogue.

Asynchronous provides you with the flexibility to choose the time of day that works best for you to learn your online course. You will work through your course, that is available 24/7 and will be supported by your teacher during the school day through periodic live sessions, individual meetings and communication, as needed. You are guided by a recommended timeline for completing the course by the end date. All elective courses are offered asynchronously.

Guided Learning combines the best practices from both the asynchronous and synchronous live class models, by establishing regular, scheduled connections between students and teachers. You will attend a once-a-week live online session, where your teacher offers live instruction, outlines the work for the week and provides live support. Teachers will book a 15–20-minute weekly meeting time and will communicate the time directly to you. You can contact your teacher throughout the week as needed and have online access to your course materials 24/7. The registration deadline for Guided Learning is 10 days after the beginning of the semester.

High school courses implementing Guided Learning in the 2026-27 school year are:

ELA	Math	Science	Social Science
ELA 10	Foundations of Mathematics and Pre-Calculus 10	Science 10	History 10
ELA 20	Foundations of Mathematics 20	Environmental Science 20	Indigenous Studies 10
ELA A30	Foundations of Mathematics 30	Health Science 20	History 30
ELA B30	Workplace and Apprenticeship Mathematics 10	Physical Science 20	Indigenous Studies 30
	Workplace and Apprenticeship Mathematics 20	Biology 30	
	Workplace and Apprenticeship Mathematics 30	Chemistry 30	
	Pre-Calculus 20	Physics 30	
	Pre-Calculus 30		

Note: Guided Learning is default registration for Grade 10-12 core classes within the first 10 school days of the semester.

Students registered in high school core classes will be placed in Guided Learning, unless they specifically opt for Synchronous Live or Asynchronous delivery.

For Young Adults (18-21 years old) and Adult Learners (22 and over), the default registration is to Asynchronous.

2026-27 High School Course Catalogue

Accounting 10

Prerequisite: None

Grad Pathway Credit: PAA 10 or Elective 10

Course name on official transcript: Accounting 10

Course offered: Asynchronous Semester 1 and 2 or year-long

You are introduced to the basic definitions and concepts of accounting, as well as foundational information such as the accounting equation and transaction entries. You will use this information to create financial papers that are used throughout industry to make business decisions.

Accounting 20

Prerequisite: None. Recommend completing Accounting 10

Grad Pathway Credit: PAA 20 or Elective 20

Course name on official transcript: Accounting 20

Course offered: Asynchronous Semester 1 and 2 or year-long

This course will expand your understanding of basic accounting principles, with a particular focus on those used by retail companies. You will learn how to record various journal entries, such as sales and purchases.

Accounting 30

Prerequisite: None. Recommend completing Accounting 20

Grad Pathway Credit: PAA 30 or Elective 30

Course name on official transcript: Accounting 30

Course offered: Asynchronous Semester 1 and 2 or year-long

This course focuses on managerial accounting. You will learn about cost behaviour, depreciation, inventory valuation, accruals and deferrals, profit planning and the use of budgets, analysis and interpretation of financial statements.

Agribusiness 30

Prerequisite: None

Grad Pathway Credit: PAA 30 or Elective 30

Course name on official transcript: Agribusiness 30

Course offered: Asynchronous Semester 1 and 2 or year-long

You will learn about the structure and diversity of Saskatchewan's agriculture industry, how agricultural products move through the supply chain and the role agribusiness plays in supporting modern food, fuel and fibre production. This course also examines the economic, environmental and social impacts of agriculture locally and globally, while exploring how innovation, technology, marketing and regulation shape the industry.

Agricultural Equipment Technician 20 (theory with work placement)

Prerequisite: None

Grad Pathway Credit: PAA 20 or Elective 20

Course name on official transcript: Agricultural Equipment Technician 20

Course offered: Asynchronous Semester 1 only

You will learn about the latest in agriculture technology and how to troubleshoot and repair farm equipment. You will be introduced to large and small agriculture equipment with a focus on safety, while exploring what it is like to be part of this in-demand career. The course consists of 50 hours of online theory (September to mid-November), a 50-hour work placement at a local ag equipment dealership (mid-November to end of January) and an option to attend an AET Learning Camp at Saskatchewan Polytechnic in Saskatoon.

Agricultural Equipment Technician 30 (theory with work placement)

Prerequisite: None. Recommend completing Agricultural Equipment Technician 20

Grad Pathway Credit: PAA 30 or Elective 30

Course name on official transcript: Agricultural Equipment Technician 30

Course offered: Asynchronous Semester 1 only

You will learn about combustion engines and drivetrains, hydraulic and pneumatic power bearings, gears, seals, electrical fundamentals and career opportunities. This course consists of 50 hours of online theory (September to mid-November), a 50-hour work placement at a local ag equipment dealership (mid-November to end of January) and an option to attend an AET Learning Camp at Saskatchewan Polytechnic in Saskatoon.

Agriculture Production - Cow / Calf A10

Prerequisite: None

Grad Pathway Credit: PAA 10 or Elective 10

Course name on official transcript: Agriculture Production A10

Course offered: Asynchronous Semester 1 and 2 or year-long

****Note: Access to cattle and livestock facilities is required to take this course.**

*****Students can take either Cow/Calf or Equine Studies to earn this credit, but not both.**

This course introduces students to farmyard operations and setup, cattle care and production, mental health awareness and the design of livestock facilities. You will learn about health and safety, fire prevention, cattle behaviour, operation of stock handling equipment, animal physiology and anatomy and cattle disorders.



Agriculture Production - Cow / Calf A20

Prerequisite: None. Recommend completing Agriculture Production – Cow/Calf A10

Grad Pathway Credit: PAA 20 or Elective 20

Course name on official transcript: Agriculture Production A20

Course offered: Asynchronous Semester 1 and 2 or year-long

****Note: Access to cattle and livestock facilities is required to take this course.**

*****Students can take either Cow/Calf or Equine Studies to earn this credit, but not both.**

This course focuses on cattle production, safety, planning, nutrition, healthcare, pasture maintenance, record-keeping and production regulations. You will explore topics related to farm safety, livestock handling and regulations, record keeping, breeding programs, nutrition and healthcare, and farm maintenance.

Agriculture Production - Cow / Calf A30

Prerequisite: None. Recommend completing Agriculture Production – Cow/Calf A20

Grad Pathway Credit: PAA 30 or Elective 30

Course name on official transcript: Agriculture Production A30

Course offered: Asynchronous Semester 1 and 2 or year-long

****Note: Access to cattle and livestock facilities is required to take this course.**

*****Students can take either Cow/Calf or Equine Studies to earn this credit, but not both.**

You will gain the knowledge and skills necessary for successful cattle production. This includes learning about farm safety, understanding mental health in agriculture and exploring modern Indigenous farming practices. You will also explore livestock feeding programs and healthcare, effective record-keeping and pasture management strategies.

Work Placement Course Registration Deadlines

Semester 1 courses with work placements - September 30

Year-long courses with work placements - December 11

Semester 2 courses with work placements - February 26

Agriculture Production - Equine Studies A10

Prerequisite: None

Grad Pathway Credit: PAA 10 or Elective 10

Course name on official transcript: Agriculture Production A10

Course offered: Asynchronous Semester 1 and 2 or year-long

****Note:** Access to horses and facilities is required to take this course.

*****Students can take either Cow/Calf or Equine Studies to earn this credit, but not both.**

You will learn about horse production, safe handling and behaviour, maintaining equine facilities and their environment and how to maintain equine health. You will read, observe, research and carry out hands-on activities to expand your knowledge. Due to the potential hazards of handling horses, you must have permission from an adult mentor who is willing to supervise and guide the hands-on activities.

Agriculture Production - Equine Studies A20

Prerequisite: None. Recommend completing Agriculture Production – Equine Studies A10

Grad Pathway Credit: PAA 20 or Elective 20

Course name on official transcript: Agriculture Production A20

Course offered: Asynchronous Semester 1 and 2 or year-long

****Note:** Access to horses and facilities is required to take this course.

*****Students can take either Cow/Calf or Equine Studies to earn this credit, but not both.**

You will expand your knowledge in maintaining equine environments, apply business management skills and gain confidence in tack procedures, grooming routines and safety practices. Due to the potential hazards of handling horses, you must have permission from an adult mentor who is willing to supervise and guide the hands-on activities.



Agriculture Production - Equine Studies A30

Prerequisite: None. Recommend completing Agriculture Production - Equine Studies A20

Grad Pathway Credit: PAA 30 or Elective 30

Course name on official transcript: Agriculture Production A30

Course offered: Asynchronous Semester 1 and 2 or year-long

****Note:** Access to horses and facilities is required to take this course.

*****Students can take either Cow/Calf or Equine Studies to earn this credit, but not both.**

You will enhance your knowledge in basic equine reproduction, recognize and prevent common diseases in horses, offer basic first aid and provide for more complex nutritional requirements. Due to the potential hazards of handling horses, you must have permission from an adult mentor who is willing to supervise and guide the hands-on activities.

Agriculture Production - Field Crop B10

Prerequisite: None

Grad Pathway Credit: PAA 10 or Elective 10

Course name on official transcript: Agriculture Production B10

Course offered: Asynchronous Semester 1 and 2 or year-long

****Note:** Access to a grain farm and equipment is required to take this course.

This course focuses on exploring specialty crops, technology in crop production, crop facilities and farmyard design, soil sampling, mental health and safety and career opportunities. You will be required to submit videos demonstrating several of the skills covered within the course.

Agriculture Production - Field Crop B20

Prerequisite: None. Recommend completing Agriculture Production - Field Crop B10

Grad Pathway Credit: PAA 20 or Elective 20

Course name on official transcript: Agriculture Production B20

Course offered: Asynchronous Semester 1 and 2 or year-long

****Note: Access to a grain farm and equipment is required to take this course.**

You will explore topics related to farm safety, planning for crop production, soil nutrient cycles and management, fertilizers, precision agriculture and farming facility considerations, as well as mental health and safety for farmers. You will be required to submit videos demonstrating several of the skills covered within the course.

Agriculture Production - Field Crop B30

Prerequisite: None. Recommend completing Agriculture Production - Field Crop B20

Grad Pathway Credit: PAA 30 or Elective 30

Course name on official transcript: Agriculture Production B30

Course offered: Asynchronous Semester 1 and 2 or year-long

****Note: Access to a grain farm and equipment is required to take this course.**

You will evaluate how to manage soil health, assess crop management and health through sampling. You will also explore precision agriculture, consider transportation in agriculture, keep detailed records and apply pest management strategies. You will be required to submit videos demonstrating several of the skills covered within the course.

Agriculture and Sustainable Food Systems 20

****Note:** This course has been replaced by Agribusiness 30 beginning in the 2026-27 school year.

Animation 20L

Prerequisite: None

Grad Pathway Credit: Elective 20

Course name on official transcript: Animation 20L

Course offered: Asynchronous Semester 1 and 2 or year-long

****Note: You are required to have a computer that is capable of running Maya software, check saskDLC.ca for further technical requirements. Maya software is provided by Sask DLC.**

***** There is limited space in this course, registration will be closed once at capacity.**

This course showcases why and how animators play such an important role in the animation, visual effects and video game industries. With Disney and the Vancouver Animation School providing resources, Animation 20L encourages students to explore 3D character animation, bringing life to a cast of characters.

Animation 30L

Prerequisite: None. Recommend completing Animation 20L or Animation B20

Grad Pathway Credit: Elective 30

Course name on official transcript: Animation 30L

Course offered: Asynchronous Semester 1 and 2 or year-long

****Note: You are required to have a computer that is capable of running Maya software, check saskDLC.ca for further technical requirements. Maya software is provided by Sask DLC.**

***** There is limited space in this course, registration will be closed once at capacity.**

You will develop your own short, animated film and experience the real-world filmmaking process from pitching the initial idea to fully producing a short, animated scene. Resources are personalized to your skill level and project. The course includes resources developed in partnership with Vancouver Animation School.

Astronomy 20L

Prerequisite: None. Recommend completing Science 10, Workplace and Apprenticeship Mathematics 10 or Foundations of Mathematics and Pre-Calculus 10

Grad Pathway Credit: Elective 20

Course name on official transcript: Astronomy 20L

Course offered: Asynchronous Semester 1 and 2 or year-long

You will take a journey through the universe to explore everything from the potential for extraterrestrial life to the evolution of stars and galaxies.

Autobody 10 (theory only)

Prerequisite: None

Grad Pathway Credit: PAA 10 or Elective 10

Course name on official transcript: Autobody 10

Course offered: Asynchronous Semester 1 and 2 or year-long

You will be introduced to the basic skills needed in the autobody industry. You will study various hand and power tools, repair techniques and career opportunities. Personal and workplace safety are an emphasis throughout the course. Registered students are also invited to participate in an optional one-day Autobody Learning Camp held at Saskatchewan Polytechnic.

Autobody 10 (theory with work placement)

Prerequisite: None

Grad Pathway Credit: PAA 10 or Elective 10

Course name on official transcript: Autobody 10

Course offered: Asynchronous Semester 1 and 2 or year-long

You will be introduced to the basic skills needed in the autobody industry. You will study various hand and power tools, repair techniques and career opportunities. Personal and workplace safety are an emphasis throughout the course. This course consists of 75 hours of online theory and a 25-hour work placement that is coordinated by Sask DLC. You can also participate in an optional one-day Autobody Learning Camp at Saskatchewan Polytechnic that counts towards the work placement hours.



Autobody A20 (theory with work placement)

Prerequisite: None. Recommend completing Autobody 10

Grad Pathway Credit: PAA 20 or Elective 20

Course name on official transcript: Autobody A20

Course offered: Asynchronous Semester 1 and 2 or year-long

You will study repair techniques including glass, rust damage and contoured surfaces and gain a basic understanding of refinishing, repainting and detailing techniques used in the industry. The course consists of 50 hours of online theory and a 50-hour work placement that is coordinated by Sask DLC. You can also participate in an optional one-day Autobody Learning Camp at Saskatchewan Polytechnic, that counts towards the work placement hours.

Work Placement Course Registration Deadlines

Semester 1 courses with work placements - September 30

Year-long courses with work placements - December 11

Semester 2 courses with work placements - February 26

Autobody B20 (theory with work placement)

Prerequisite: None. Recommend completing Autobody A20

Grad Pathway Credit: PAA 20 or Elective 20

Course name on official transcript: Autobody B20

Course offered: Asynchronous Semester 1 and 2 or year-long

You will explore refinishing and repair techniques, study vehicle components and learn how to maintain, assess and repair damage effectively. You will also gain a basic understanding of the time and cost associated with various autobody repairs. The course consists of 50 hours of online theory and a 50-hour work placement that is coordinated by Sask DLC. You can also participate in an optional one-day Autobody Learning Camp at Saskatchewan Polytechnic that counts towards the work placement hours.

Baseball Skills 10L

Prerequisite: None

Grad Pathway Credit: Elective 10

Course name on official transcript: Baseball 10L

Course offered: Asynchronous Semester 1 and 2 or year-long

You will be introduced to the basic concepts of baseball, while developing fitness levels, mental training and leadership skills. You will explore the basic elements and rules of baseball, demonstrate individual and team skills and examine baseball strategies and how to analyze baseball skills. You will also explore pathways to play baseball beyond high school.

Baseball Skills 20L

Prerequisite: None

Grad Pathway Credit: Elective 20

Course name on official transcript: Baseball 20L

Course offered: Asynchronous Semester 1 and 2 or year-long

This course is designed to introduce intermediate baseball concepts, while exploring strategies to manage nutrition levels and mental wellness and building upon leadership skills. You will apply the rules of baseball and learn how baseball statistics and metrics are measured and how they can be used strategically and support athlete improvement.



Baseball Skills 30L

Prerequisite: None

Grad Pathway Credit: Elective 30

Course name on official transcript: Baseball 30L

Course offered: Asynchronous Semester 1 and 2 or year-long

This course is designed to explore advanced baseball concepts. You will examine how the rules and analytics of baseball have evolved over time, as well as the impact baseball has on various cultures. You will explore the non-playing careers within the game including coaching, umpiring, recruiting and broadcasting. You will also advance your knowledge of self-care, sportsmanship, team building and leadership.

Biology 30

Prerequisite: Environmental Science 20 or Health Science 20

Grad Pathway Credit: Science 30 or Elective 30

Course name on official transcript: Biology 30

Course offered: Guided Learning Semester 1 and 2; Synchronous Live Class Semester 1 and 2; Asynchronous Semester 1 and 2 or year-long

You will learn how to define and study life, from cells and energy transfer to the evolution, diversity and classification of organisms. This course also builds your understanding of genetics and molecular biology, including inheritance and DNA technologies, while asking you to consider their impacts on society, the environment and Indigenous and global perspectives through an independent study project.

Building Trades B10 (theory only)

Prerequisite: None

Grad Pathway Credit: PAA Survey 10 or Elective 10

Course name on official transcript: Practical and Applied Arts Survey B10

(Can be changed to A10 upon request to helpdesk@saskDLC.ca)

Course offered: Asynchronous Semester 1 and 2 or year-long

You will learn the fundamentals of construction and carpentry, electrical work, plumbing, HVAC/refrigeration, and steamfitting/pipefitting, all in one class. You'll build a solid foundation and get a clearer idea of which trades fit your interests and talents, setting you up for future specialization and success.

Calculus 30

Prerequisite: Pre-Calculus 30

Grad Pathway Credit: Math 30 or Elective 30

Course name on official transcript: Calculus 30

Course offered: Synchronous Live Class Semester 2; Asynchronous Semester 1 and 2 or year-long

You will learn how to determine derivatives of functions and how to use those calculations to solve problems that pertain to velocity, acceleration and optimization problems. You will also study the opposite function, integrals and explore how they can be used to determine if they are under or between curves.

Career and Life Readiness B30

Prerequisite: None

Grad Pathway Credit: PAA Survey 30 or Elective 30

Course name on official transcript: Practical and Applied Arts Survey B30

(Can be changed to A30 upon request to helpdesk@saskDLC.ca)

Course offered: Asynchronous Semester 1 and 2 or year-long

You will learn the skills and knowledge needed to be well-rounded, independent adults. You will explore career options, workplace expectations, financial literacy, self-care and life transitions. The course will help students plan for the future, make informed decisions and develop practical tools to contribute confidently and successfully to society.

Chemistry 30

Prerequisite: Physical Science 20

Grad Pathway Credit: Science 30 or Elective 30

Course name on official transcript: Chemistry 30

Course offered: Guided Learning Semester 1 and 2; Synchronous Live Class Semester 1 and 2; Asynchronous Semester 1 and 2 or year-long

You will learn how the structure and bonding of matter explain the properties and behaviours of materials, from intermolecular forces to organic compounds and modern materials. This course also examines equilibrium, acids and bases, and redox and electrochemical systems.

Communication Media 10

****Note:** This course has been replaced by Digital Content Creation 10 beginning in the 2026-27 school year.

Communication Media 20

****Note:** This course has been replaced by Communication Media - Audio and Video Production 20 beginning in the 2026-27 school year.

Students are permitted to earn credit in no more than two PAA Survey courses at each of the 10-, 20- and 30-levels. Advisors/OLFs are asked to check student eligibility for survey courses prior to course registration.

Communication Media – Audio and Video Production 20

Prerequisite: None

Grad Pathway Credit: PAA 20 or Elective 20

Course name on official transcript: Communication Media 20

Course offered: Asynchronous Semester 1 and 2 or year-long

****Note: Students with a Communication Media 20 (7015) credit cannot earn credit for Communication Media – Audio and Video Production 20.**

You will learn about the various production process required to create video, audio and interactive media content meant to communicate messages effectively.

Computer Networking 30L

Prerequisite: None. Recommend completing IT Support Technician 20L

Grad Pathway Credit: Elective 30

Course name on official transcript: Computer Networking 30L

Course offered: Asynchronous Semester 1 and 2 or year-long

****Note: There is limited space in this course, registration will be closed once at capacity.**

This course covers advanced networking concepts including basic cabling, firewalls, switching, WANs, wireless networking, and security. Through hands-on modules, you will gain practical experience preparing for roles in network administration and engineering.

Computer Science 20

Prerequisite: Science 10

Grad Pathway Credit: Science 20 or Elective 20

Course name on official transcript: Computer Science 20

Course offered: Asynchronous Semester 1 and 2 or year-long

****Note: There is limited space in this course, registration will be closed once at capacity.**

You will learn introductory programming concepts, explore applications of computer science, learn about programming languages, apply problem solving strategies to develop algorithms and consider the impact of computers on society.

Computer Science 30

Prerequisite: Computer Science 20

Grad Pathway Credit: Science 30 or Elective 30

Course name on official transcript: Computer Science 30

Course offered: Asynchronous Semester 1 and 2 or year-long

****Note: There is limited space in this course, registration will be closed once at capacity.**

This course will challenge students in implementing coding practices, investigate types of data structures, simplify programming problems, explore object-oriented programming and character encoding. You will apply learned concepts in a project of particular interest to you.

Computer Security 30L

Prerequisite: None. Recommend completing IT Fundamentals B10 and IT Support Technician 20L

Grad Pathway Credit: Elective 30

Course name on official transcript: Computer Security 30L

Course offered: Asynchronous Semester 1 and 2 or year-long

****Note: There is limited space in this course, registration will be closed once at capacity.**

You will learn about the latest security tools and techniques to safeguard digital assets and networks. Topics include threat analysis, physical security, network infrastructure, access management, cryptography, wireless security and incident response. Practical exercises develop skills in risk management and incident handling for careers in security analysis and administration.

Construction and Carpentry 10

****Note:** This course has been replaced by Building Trades 10 beginning in the 2026-27 school year.

Construction and Carpentry 20 (theory with work placement)

Prerequisite: None. Recommend completing Building Trades 10 or Construction and Carpentry 10

Grad Pathway Credit: PAA 20 or Elective 20

Course name on official transcript: Construction and Carpentry 20

Course offered: Asynchronous Semester 1 and 2 or year-long

****Note: Occupational safety regulations require students to be at least 16 years old to take this course.**

You will expand your knowledge on the safe use of power tools, learn basic theory on building layouts, floor and wall framing and foundations. The course consists of 50 hours of online theory and a 50-hour work placement that is coordinated by Sask DLC.

Creative Writing 20

Prerequisite: English Language Arts 10 or ELA A10 or ELA B10

Grad Pathway Credit: Elective 20

Course name on official transcript: Creative Writing 20

Course offered: Asynchronous Semester 1 and 2 or year-long

You will delve into fiction, non-fiction, poetry and script writing, reading, analyzing and creating works in each genre. Through this process you will learn to identify the key elements of each form and apply this knowledge to produce original creative pieces.

Creative Writing 30L

Prerequisite: None

Grad Pathway Credit: Elective 30

Course name on official transcript: Creative Writing 30L

Course offered: Asynchronous Semester 1 and 2 or year-long

You will study poetry, short fiction, play writing and non-fiction, discovering how ideas can develop and transform through exploration and critical thinking. You will also reflect on and critically analyze published writing, your own writing and your peers' writing.

Digital Content Creation B10

Prerequisite: None

Grad Pathway Credit: PAA Survey 10 or Elective 10

Course name on official transcript: Practical and Applied Arts Survey B10

(Can be changed to A10 upon request to helpdesk@saskDLC.ca)

Course offered: Asynchronous Semester 1 and 2 or year-long

You will learn how to use different forms of digital media to communicate and explore a variety of tools and software to do so from photo, video and audio production to graphic design and animation.

Digital Media and Web Design B20

Prerequisite: None. Recommend completing IT Fundamentals B10

Grad Pathway Credit: PAA Survey 20 or Elective 20

Course name on official transcript: Practical and Applied Arts Survey B20

(Can be changed to A20 upon request to helpdesk@saskDLC.ca)

Course offered: Asynchronous Semester 1 and 2 or year-long

You will explore tools for creating digital audio, learn the principles of graphic design and how to apply these concepts in the development of web pages using HTML and CSS. Additionally, you'll study the history of media, its evolving role over time and how communication models explain effective communication.

Drafting and Computer-Aided Design 10

Prerequisite: None.

Grad Pathway Credit: PAA 10

Course name on official transcript: Drafting and Computer-Aided Design 10

Course offered: Asynchronous Semester 1 and 2 or year-long

****Note:** You will be required to have computer that is capable of running AutoCAD software, check [saskDLC.ca](https://saskdLC.ca) course descriptions for further technical requirements. The software required for this course is provided by Sask DLC. There is limited space in this course, registration will be closed once at capacity.

You will learn basic terminology and concepts around computer-aided design, start creating basic mechanical drawings and explore dimensioning. By the end of the course, you will be able to use and produce detailed drafting plans for a variety of objects and mechanical parts.

Drafting and Computer-Aided Design 20

Prerequisite: None. Recommend completing Drafting and Computer-Aided Design 10.

Grad Pathway Credit: PAA 20

Course name on official transcript: Drafting and Computer-Aided Design 20

Course offered: Asynchronous Semester 1 and 2 or year-long

****Note:** You will be required to have computer that is capable of running AutoCAD and REVIT software, check [saskDLC.ca](https://saskdLC.ca) course descriptions for further technical requirements. The software required for this course is provided by Sask DLC. There is limited space in this course, registration will be closed once at capacity.

You will focus on residential home design and learn to recognize and understand different types of planning documents such as floor plans, foundation plans elevations and detail drawings. Understanding the types, uses and typical locations of specific building materials, you will create 2D and 3D architectural drawings of homes.

Drafting and Computer-Aided Design 30

Prerequisite: None. Recommend completing Drafting and Computer-Aided Design 20.

Grad Pathway Credit: PAA 30

Course name on official transcript: Drafting and Computer-Aided Design 30

Course offered: Asynchronous Semester 1 and 2 or year-long

****Note:** You will be required to have computer that is capable of running AutoCAD and Fusion 360 software, check [saskDLC.ca](https://saskdLC.ca) course descriptions for further technical requirements. The software required for this course is provided by Sask DLC. There is limited space in this course, registration will be closed once at capacity.

The drafting challenges tackled will involve complex angles, multiple dimensions and many interrelated parts. You will produce section views, mechanical working drawings and 3D drawings of several different objects, each one demonstrating a thorough understanding of advance dimensioning and CAD drafting best practices.

Earth Science 30

Prerequisite: Physical Science 20 or Environmental Science 20

Grad Pathway Credit: Science 30 or Elective 30

Course name on official transcript: Earth Science 30

Course offered: Asynchronous Semester 1 and 2 or year-long

You will examine plate tectonics, geological history and the dynamic interactions between the lithosphere, atmosphere and hydrosphere to understand the formation of Earth's surface features and mineral resources. You will also explore the multi-disciplinary nature of the field and related career paths in Saskatchewan and beyond.

Electrical and Electronics 10

****Note:** This course has been replaced by Building Trades 10 beginning in the 2026-27 school year.

Electrical 20 (theory with work placement)

Prerequisite: None. Recommend completing Building Trades 10 or Electrical and Electronics 10

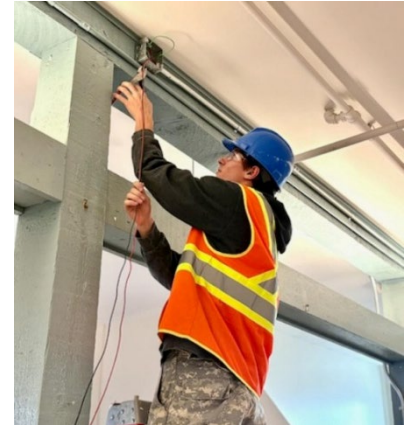
Grad Pathway Credit: PAA 20 or Elective 20

Course name on official transcript: Electrical 20

Course offered: Asynchronous Semester 1 and 2 or year-long

****Note: Occupational safety regulations require students to be at least 16 years old to take this course.**

You will learn about electrical principles, gain knowledge of residential wiring and lighting as well as an understanding of the Canadian Electrical Code and other electrical regulations. The course consists of 50 hours of online theory and a 50-hour work placement coordinated by Sask DLC.



Energy and Mines - Energy Production 20 (theory only)

Prerequisite: None

Grad Pathway Credit: PAA 20 or Elective 20

Course name on official transcript: Energy and Mines 20

Course offered: Asynchronous Semester 1 and 2 or year-long

*****Students can earn credit in either Energy and Mines - Energy Production 20 or Energy and Mines - Oil & Gas 20, but not both.**

You will learn about the various methods of energy production in Saskatchewan, as well as new energy alternatives. You will also explore careers, training and workplace safety while considering how to build a sustainable energy future in Saskatchewan.

Energy and Mines - Oil & Gas 20 (theory with work placement)

Prerequisite: None

Grad Pathway Credit: PAA 20 or Elective 20

Course name on official transcript: Energy and Mines 20

Course offered: Asynchronous Semester 2 only

****Note: Space is limited in this course, based on the availability of work placements.**

*****Students can earn credit in either Energy and Mines - Energy Production 20 or Energy and Mines - Oil & Gas 20, but not both.**

You will learn about energy exploration, production and environmental stewardship practices, as well as industry trends, safety, economic impacts and technological advancements. You will have the opportunity to explore the many career paths in the energy sector. This course consists of 50 hours of online theory and a 50-hour work placement coordinated by Sask DLC.

Energy and Mines - Oil & Gas 30 (theory with work placement)

Prerequisite: None

Grad Pathway Credit: PAA 30 or Elective 30

Course name on official transcript: Energy and Mines 30

Course offered: Asynchronous Semester 2 only

****Note: Space is limited in this course, based on the availability of work placements.**

You will learn about the royalty structure of the energy industry, the uses of petroleum products and the processes involved in refining and managing oil and gas resources. The course also examines the local and global economic impacts of the oil and gas industry while exploring career opportunities in the energy sector. This course consists of 50 hours of online theory and a 50-hour work placement coordinated by Sask DLC.

English Language Arts 10 (ELA 10)

Prerequisite: None

Grad Pathway Credit: ELA 10

Course name on official transcript: English Language Arts 10 (4124)

Course offered: Guided Learning Semester 1 and 2; Synchronous Live Class Semester 1 and 2; Asynchronous Semester 1 and 2 or year-long.

****Note:** This course meets the 10-level ELA requirement for a SK Regular (new) graduation plan.

Students on a Regular (old) graduation plan who require ELA A10 (4017) and ELA B10 (4018) should contact Helpdesk for more information (helpdesk@saskDLC.ca). Credit may not be earned for both ELA A10 and ELA 10 or ELA B10 and ELA 10.

You will develop literacy skills in constructing meaning, creating original compositions across genres and recognizing how reflection, collaboration and revision support future learning. This course lays the groundwork for deeper understanding of how language can be used to express, challenge or reflect lived experiences.

English Language Arts 20 (ELA 20)

Prerequisite: None

Grad Pathway Credit: ELA 20

Course name on official transcript: English Language Arts 20 (6017)

Course offered: Guided Learning Semester 1 and 2; Synchronous Live Class Semester 1; Asynchronous Semester 1 and 2 or year-long.

****Note:** This course meets the 20-level ELA requirement for students on the Regular (old) and SK Regular (new) graduation plans.

This course introduces the journey through life and what we learn about ourselves, others and the world around us. You will explore how turning points and transitions that occur in our life may affect the path we are on.

English Language Arts A30 (ELA A30)

Prerequisite: ELA 20

Grad Pathway Credit: ELA 30

Course name on official transcript: English Language Arts A30 (8017)

Course offered: Guided Learning Semester 1 and 2; Synchronous Live Class Semester 1; Asynchronous Semester 1 and 2 or year-long.

****Note:** This course meets the 30-level ELA requirement for students on the SK Regular (new) graduation plan or one of the two 30-level ELA requirements for the Regular (old) graduation plan.

You will explore the influences that create Canadian culture and identity through our country's diverse landscapes and peoples.

English Language Arts B30 (ELA B30)

Prerequisite: ELA 20

Grad Pathway Credit: ELA 30

Course name on official transcript: English Language Arts B30 (8018)

Course offered: Guided Learning Semester 1 and 2; Synchronous Live Class Semester 2; Asynchronous Semester 1 and 2 or year-long.

****Note:** This course meets the 30-level ELA requirement for students on the SK Regular (new) graduation plan or one of the two 30-level ELA requirements for the Regular (old) graduation plan.

You will explore thoughts, beliefs and assumptions as they examine the search for self and how they relate to others.

Given the differences in the English Language Arts (ELA) grad requirements between the SK Regular (new) and the Regular (old) graduation plans, it is important to ensure the correct courses are being chosen. Students registering for ELA courses are advised to consult an Academic Advisor or contact Helpdesk (helpdesk@saskDLC.ca) to ensure the proper courses are being selected.

Entrepreneurship 20

Prerequisite: None

Grad Pathway Credit: PAA 20 or Elective 20

Course name on official transcript: Entrepreneurship 20

Course offered: Asynchronous Semester 1 and 2 or year-long

You will explore the role of entrepreneurs in society and the economy, learn the importance of business and community development and social responsibility. You'll learn how marketing, financial records, planning and management contribute to developing key entrepreneurial skills and mindset. These abilities prepare them for success in entrepreneurship or any career path. You will analyze entrepreneurial traits and assess their own interest and suitability for entrepreneurship.

Entrepreneurship 30

Prerequisite: None

Grad Pathway Credit: PAA 30 or Elective 30

Course name on official transcript: Entrepreneurship 30

Course offered: Asynchronous Semester 1 and 2 or year-long

You will explore the skills needed to start and manage a business and learn about the role of entrepreneurship in society. In the last 20 hours of the course you will create a business plan, launch a business venture, and reflect on its success. The course also covers how businesses operate and the structure of the Canadian economic system.

Environmental Science 20

Prerequisite: Science 10

Grad Pathway Credit: Science 20 or Elective 20

Course name on official transcript: Environmental Science 20

Course offered: Guided Learning Semester 1 and 2; Synchronous Live Class Semester 1 and 2; Asynchronous Semester 1 and 2 or year-long

You will examine ecosystems, biodiversity, air quality, climate change, population growth, resource management and pollution focusing on both local and global perspectives. You will investigate environmental challenges and explore strategies and technologies to address these issues.

Exercise Science 30L

Prerequisite: None. Recommend completing Health Science 20

Grad Pathway Credit: Elective 30

Course name on official transcript: Exercise Science 30L

Course offered: Asynchronous Semester 1 and 2 or year-long

You will learn about the importance of physical activity by learning about the anatomy, energy, cardiovascular and respiratory systems, human performance and biomechanics, nutrition, training and sport in today's world.

Financial Literacy 10

Prerequisite: None

Grad Pathway Credit: Financial Literacy 10

Course name on official transcript: Financial Literacy 10

Course offered: Synchronous Live Class Semester 1 and 2; Asynchronous Semester 1 and 2 or year-long

You will develop the skills and knowledge to help make responsible financial decisions, so that you are prepared and feel empowered to make informed decisions. You will have the opportunity to discover how financial literacy, education, career, family and lifestyle choices are all interrelated in your lives and future planning. This course focuses on critical thinking and overall financial well-being, through topics including earning, saving, investing, spending, borrowing, sharing and protecting.

Financial Literacy 20

Prerequisite: None

Grad Pathway Credit: PAA 20 or Elective 20

Course name on official transcript: Financial Literacy 20

Course offered: Asynchronous Semester 1 and 2 or year-long

You will move from financial literacy to developing financial capacity as you continue to develop strong habits and practical skills you will use in your future. Students will learn about interest, financial risks, investments, and how the stock market works. You will also look at financial contracts, compare buying, renting, and leasing, and learn why protecting against financial loss is important, to prepare you for financial success.

Financial Literacy 30

Prerequisite: None

Grad Pathway Credit: PAA 30 or Elective 30

Course name on official transcript: Financial Literacy 30

Course offered: Asynchronous Semester 1 and 2 or year-long

You will learn about in-depth budgeting, bankruptcy, behavior finance and macroeconomics, financial planning and investing as well as exploring buying versus leasing, and what you need to know about home purchases and mortgages. This course will help you plan for the future and explore post-secondary and career opportunities in the financial sector.

Food Studies 30

Prerequisite: None

Grad Pathway Credit: PAA 30 or Elective 30

Course name on official transcript: Food Studies 30

Course offered: Asynchronous Semester 1 and 2 or year-long

This course will expand your knowledge and skills in food preparation, nutrition and food systems. You will develop consumer awareness and personal skills with the goal of cooking healthy and nutritious meals.

Football Skills 10L

Prerequisite: None

Grad Pathway Credit: Elective 10

Course name on official transcript: Football 10L

Course offered: Asynchronous Semester 1 and 2 or year-long

You will be introduced to the basic concepts of football. You will explore the elements and rules of tackle, touch and flag football and demonstrate individual and team football skills, while developing your fitness levels, mental training and leadership skills.

Football Skills 20L

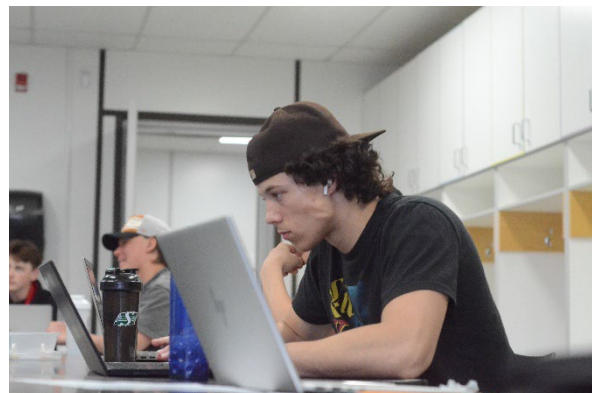
Prerequisite: None

Grad Pathway Credit: Elective 20

Course name on official transcript: Football 20L

Course offered: Asynchronous Semester 1 and 2 or year-long

You will be introduced to intermediate level football concepts including the areas of injury management, nutrition, mental wellness and team building. The course takes an extensive look at officiating and the application of rules, as well as coaching principles such as strategy and game footage analysis. Opportunities to play football after high school are also explored.



Football Skills 30L

Prerequisite: None

Grad Pathway Credit: Elective 30

Course name on official transcript: Football 30L

Course offered: Asynchronous Semester 1 and 2 or year-long

This course is designed to engage you in advanced football concepts. You will examine how the game has evolved over time and explore how football is creating opportunity for underrepresented populations. Methods of planning game strategy, including in-game decision considerations, are looked at. You will also deepen your understanding of leadership, goal setting, community partnerships and secondary careers related to football.

Forensic Science 20L

Prerequisite: None. Recommend completing Science 10

Grad Pathway Credit: Elective 20

Course name on official transcript: Forensic Science 20L

Course offered: Asynchronous Semester 1 and 2 or year-long

Explore how evidence is collected, processed and analyzed. You will look at different types of evidence (fingerprints, bite marks, footprints, bloodstains, hair and fibre and gunshot residue) that are commonly observed in crime scenes. Students will examine a variety of criminal activities including arson, explosions and fraud, while studying real cases involving criminal profiling and motives.



Foundations of Mathematics and Pre-Calculus 10

Prerequisite: None

Grad Pathway Credit: Math 10 or Elective 10

Course name on official transcript: Math: Foundations and Pre-Calculus 10

Course offered: Guided Learning Semester 1 and 2; Synchronous Live Class Semester 1 and 2; Asynchronous Semester 1 and 2 or year-long

You will develop strong problem-solving skills and a deeper understanding of key mathematical concepts used in school, work and everyday life. You will learn about linear measurement, systems of measurement, trigonometry, multiplying and factoring polynomials, radicals and powers, relations and functions, and systems of linear equations.

Foundations of Mathematics 20

Prerequisite: Foundations of Mathematics and Pre-Calculus 10

Grad Pathway Credit: Math 20 or Elective 20

Course name on official transcript: Math: Foundations 20

Course offered: Guided Learning Semester 1 and 2; Synchronous Live Class Semester 1 and 2; Asynchronous Semester 1 and 2 or year-long

You will deepen your understanding of mathematical concepts and problem-solving strategies needed for academic and real-world applications. Key topics include quadratic functions, geometry, trigonometry, probability and statistics.

Foundations of Mathematics 30

Prerequisite: Math Foundations of Mathematics 20

Grad Pathway Credit: Elective 30

Course name on official transcript: Math: Foundations 30

Course offered: Guided Learning Semester 1 and 2; Synchronous Live Class Semester 1 and 2; Asynchronous Semester 1 and 2 or year-long

You will focus on advanced mathematical concepts that support decision-making and problem-solving. You will build on prior learning, developing logical reasoning, number sense and analytical skills through topics such as set theory, probability, statistics, financial mathematics and design and measurement.

French (Core) 10

Prerequisite: None

Grad Pathway Credit: Elective 10

Course name on official transcript: French 10

Course offered: Asynchronous Semester 1 and 2 or year-long

You will gain a basic introduction to French vocabulary, syntax and grammatical structure through an exploration of French culture in Saskatchewan. You will have opportunities to listen, read, speak and write in French as you begin to acquire French language skills.

French (Core) 20

Prerequisite: French (Core) 10

Grad Pathway Credit: Elective 20

Course name on official transcript: French 20

Course offered: Asynchronous Semester 1 and 2 or year-long

Core French 20 is a continuation of the French 10 program. Students will progress in their learning of French vocabulary, syntax and grammatical structure through an exploration of French culture in Canada. Students will have opportunities to listen, read, speak and write in French as they further develop language skills.

French (Core) 30

Prerequisite: French (Core) 20

Grad Pathway Credit: Elective 30

Course name on official transcript: French 30

Course offered: Asynchronous Semester 1 and 2 or year-long

Core French 30 builds on the Core French 20 program as students strive for mastery of French vocabulary, syntax and grammatical structures through an exploration of French culture throughout the world. Students will be given higher-level opportunities to listen, read, speak and write in French as they begin to develop command of their language skills.

Graphic Arts 20

Prerequisite: None

Grad Pathway Credit: PAA 20

Course name on official transcript: Graphic Arts 20

Course offered: Asynchronous Semester 1 and 2 or year-long

You will learn the basics of graphic design using industry-standard software. The course covers design fundamentals, business skills like creating logos and creative techniques such as illustration and cartoon character design.

Hairstyling and Esthetics 10

Prerequisite: None

Grad Pathway Credit: PAA 10 or Elective 10

Course name on official transcript: Hairstyling and Esthetics 10

Course offered: Asynchronous Semester 1 and 2, no year-long option available

****Note: There is limited space in this course based on number of resource kits. Registration will be closed once at capacity.**

You will learn fundamental skills in hairstyling, giving manicures and facials, providing hair and scalp analyses and treatments.

Hairstyling and Esthetics 20

Prerequisite: None. Recommend completing Hairstyling and Esthetics 10

Grad Pathway Credit: PAA 20 or Elective 20

Course name on official transcript: Hairstyling and Esthetics 20

Course offered: Asynchronous Semester 1 and 2, no year-long option available

****Note: There is limited space in this course based on number of resource kits. Registration will be closed once at capacity.**

You will study hair care tools, design principles, hair and scalp products, hairstyling techniques as well as skin and nail care methods from a salon and spa perspective.

Health Careers 20L

Prerequisite: None

Grad Pathway Credit: Elective 20

Course name on official transcript: Health Careers 20L

Course offered: Asynchronous Semester 1 and 2 or year-long

You will learn about the structure of the health care system including specific pathways such as nursing, patient care, medical diagnostics, pharmacy, mental health, public health, medical informatics and dental care. You will gain the knowledge needed to identify the health career pathway that best fits your goals and learn about the related post-secondary programs required to work in that field.

Health Science 20

Prerequisite: Science 10

Grad Pathway Credit: Science 20 or Elective 20

Course name on official transcript: Health Science 20

Course offered: Guided Learning Semester 1 and 2; Synchronous Live Class Semester 1 and 2; Asynchronous Semester 1 and 2 or year-long

You will learn about medical knowledge systems and ethics, human anatomy, physiology, nutrition, metabolism and medical diagnostics. By understanding the basic structure and function of the human body you'll explore how different body systems work normally, what happens when they don't, and the tools and techniques used to diagnose health issues.

History 10

Prerequisite: None

Grad Pathway Credit: Social Science 10 or Elective 10

Course name on official transcript: History 10

Course offered: Guided Learning Semester 1 and 2; Synchronous Live Class Semester 1 and 2; Asynchronous Semester 1 and 2 or year-long

You will explore the changes in European society and culture from the mid-18th century to World War 1 including the French Revolution, Industrial Revolution, nationalism, liberalism and the age of New Imperialism. You will examine how worldviews shape events and influence political and economic both in the past and present.

History 20

Prerequisite: None

Grad Pathway Credit: Social Science 20 or Elective 20

Course name on official transcript: History 20

Course offered: Asynchronous Semester 1 and 2 or year-long

You will study key events of the late 19th and 20th centuries and explore how they have shaped the world. This includes critically analyzing the social, economic, and political impacts of World War I, the Roaring 20s, the Great Depression, World War II and the Cold War.

History 30

Prerequisite: None

Grad Pathway Credit: Social Science 30 or Elective 30

Course name on official transcript: History 30

Course offered: Guided Learning Semester 1 and 2; Synchronous Live Class Semester 2; Asynchronous Semester 1 and 2 or year-long

In this course you will explore the origins of the First Nations, New France, the Seven Years War, Confederation and the patriation of the constitution.

Hockey Skills 10L

Prerequisite: Student must belong to a hockey team, have a coach willing to complete an extensive assessment form and have access to ice-time.

Grad Pathway Credit: Elective 10

Course name on official transcript: Hockey Skills 10L

Course offered: Asynchronous Semester 1 and 2 or year-long

This course offers hockey players at various levels the chance to improve their skills, fitness levels, mental training and leadership skills. You will focus on both on-ice and off-ice development such as power skating, tactical skills, systems, fitness and video analysis.

Hockey Skills 20L

Prerequisite: Student must belong to a hockey team, have a coach willing to complete an extensive assessment form and have access to ice-time.

Grad Pathway Credit: Elective 20

Course name on official transcript: Hockey Skills 20L

Course offered: Asynchronous Semester 1 and 2 or year-long

This course offers hockey players at various levels the opportunity to develop their skills, fitness levels, mental training and leadership skills. You will learn about factors affecting human performance such as mental training, basic anatomy, nutrition and officiating.

Hockey Skills 30L

Prerequisite: Student must belong to a hockey team, have a coach willing to complete an extensive assessment form and have access to ice-time.

Grad Pathway Credit: Elective 30

Course name on official transcript: Hockey Skills 30L

Course offered: Asynchronous Semester 1 and 2 or year-long

This course offers hockey players at various levels the opportunity to develop their skills, fitness levels, mental training and leadership skills through individual and team goal setting, team building, sportsmanship and fair play.

Indigenous Studies 10 (formerly Native Studies)

Prerequisite: None

Grad Pathway Credit: Social Science 10 or Elective 10

Course name on official transcript: Native Studies 10

Course offered: Guided Learning Semester 1 and 2; Asynchronous Semester 1 and 2 or year-long

You will learn about the land and people of Turtle Island (North America) before and after European contact, with a focus on the vital role of Indigenous peoples in Saskatchewan's history. The course explores the diverse First Nations, Inuit and Métis perspectives on identity, community, governance, treaties and economies.

Indigenous Studies 20 (formerly Native Studies)

Prerequisite: None

Grad Pathway Credit: Social Science 20 or Elective 20

Course name on official transcript: Native Studies 20

Course offered: Asynchronous Semester 1 and 2 or year-long

This course explores contemporary issues of concerns for Indigenous peoples around the world. The principle of wholeness is prominent throughout the course as the topics of self-determination, self-governance, social justice and development are explored.

Indigenous Studies 30 (formerly Native Studies)

Prerequisite: None

Grad Pathway Credit: Social Science 30 or Elective 30

Course name on official transcript: Native Studies 30

Course offered: Guided Learning Semester 1 and 2; Asynchronous Semester 1 and 2 or year-long

You will dig into Canada's history, focusing on the story of Indigenous peoples. You will explore Canada's inconvenient truths around nation-building, social stereotypes and the prevalent myths concerning Indigenous peoples.

Information Processing 10

Prerequisite: None

Grad Pathway Credit: PAA 10 or Elective 10

Course name on official transcript: Information Processing 10

Course offered: Asynchronous Semester 1 and 2 or year-long

You will learn the basics of hardware and software, including keyboarding, word processing, spreadsheets, computer applications and an introduction to digital images. This course will help you understand how to use technology in your daily life, highlighting its benefits and addressing potential risks.

Information Processing 20

Prerequisite: None

Grad Pathway Credit: PAA 20 or Elective 20

Course name on official transcript: Information Processing 20

Course offered: Asynchronous Semester 1 and 2 or year-long

This course will help students think critically as they communicate, project plan, solve problems and create digital products.

Interior Design and Decorating 30

Prerequisite: None

Grad Pathway Credit: PAA 30 or Elective 30

Course name on official transcript: Interior Design and Decorating 30

Course offered: Asynchronous Semester 1 and 2 or year-long

You will apply design elements and principles to solve design challenges, create an upcycled sustainable project and design an accessible public space. You'll also explore how design is influenced by culture and its impact on society.

IT Fundamentals B10

Prerequisite: None

Grad Pathway Credit: PAA 10 or Elective 10

Course name on official transcript: Practical and Applied Arts Survey B10

(Can be changed to A10 upon request to helpdesk@saskDLC.ca)

Course offered: Asynchronous Semester 1 and 2 or year-long

****Note: There is limited space in this course, registration will be closed once at capacity.**

You will learn foundational concepts related to computer hardware and software, networking, databases, programming, information systems and data security. In addition to instructional videos and textual content, the course includes over 100 hands-on labs to reinforce the concepts students are learning.

IT Support Technician 20L

Prerequisite: None. Recommend completing IT Fundamentals B10

Grad Pathway Credit: Elective 20

Course name on official transcript: IT Support Technician 20L

Course offered: Asynchronous Semester 1 and 2 or year-long

****Note: There is limited space in this course, registration will be closed once at capacity.**

You will learn about the underlying technology that drives modern IT systems and prepares you to set-up, support and troubleshoot at an entry level IT position.

Law 30

Prerequisite: None

Grad Pathway Credit: Social Science 30 or Elective 30

Course name on official transcript: Law 30

Course offered: Asynchronous Semester 1 and 2 or year-long

****Note: This course meets the Social Science 20/30 requirement for a Regular (old) graduation plan. For students on a SK Regular (new) graduation plan, it is an Elective 30.**

You will explore the Canadian legal system, from the early roots in British common law to the modern Constitution and Charter of Rights and Freedoms and examine how and why Canada's legal system developed.

Leadership 20L

Prerequisite: None

Grad Pathway Credit: Elective 20

Course name on official transcript: Leadership 20L

Course offered: Asynchronous Semester 1 and 2 or year-long

You will analyze and research the areas of meetings, volunteering, leaders throughout history, and human behaviour. You will also participate in personality testing to see who you are as a learner, leader and how you can work in groups with other personalities.

Leadership 30L

Prerequisite: None

Grad Pathway Credit: Elective 30

Course name on official transcript: Leadership 30L

Course offered: Asynchronous Semester 1 and 2 or year-long

****Note: Students may take either Leadership 30L or Leadership 30L- Excellence in Hockey to earn this credit, but not both.**

You will analyze new research in positive psychology, success and emotional intelligence. You will have the potential to become successful leaders through hands-on application, mentorship, inquiry and project-based learning.

Leadership 30L – Excellence in Hockey

Prerequisite: None

Grad Pathway Credit: Elective 30

Course name on official transcript: Leadership 30L

Course offered: Asynchronous Semester 1 and 2 or year-long

****Note: Students may take either Leadership 30L or Leadership 30L - Excellence in Hockey to earn this credit, but not both.**

Through a collection of lessons and candid conversations with world-class NHL and Olympic players, along with NHL executives and scouts, this course provides impactful knowledge for high school students that are passionate about pursuing their dreams- on and off the ice. Created in partnership with Becoming Player X, this course provides valuable training and certification for your athlete leaders including Respect in Sport.

Life Transitions 30

Prerequisite: None

Grad Pathway Credit: PAA 30 or Elective 30

Course name on official transcript: Life Transitions 30

Course offered: Asynchronous Semester 1 and 2 or year-long

Through this course, you will acquire the knowledge, skills and abilities to become independent and informed adults. Students will learn about identifying, planning for and coping with change.

Mechanical and Automotive 10 (theory only)

Prerequisite: None

Grad Pathway Credit: PAA 10 or Elective 10

Course name on official transcript: Mechanical and Automotive 10

Course offered: Asynchronous Semester 1 and 2 or year-long

You will learn the basics of mechanics beginning with safety and small engines, as well as power tools, lubricants, tires and more. Registered students are also invited to participate in an optional one-day Automotive Learning Camp held at Saskatchewan Polytechnic.

Mechanical and Automotive 10 (theory with work placement)

Prerequisite: None

Grad Pathway Credit: PAA 10 or Elective 10

Course name on official transcript: Mechanical and Automotive 10

Course offered: Asynchronous Semester 1 and 2 or year-long

You will learn the basics of mechanics beginning with safety and small engines, as well as power tools, lubricants, tires and more. This course consists of 75 hours of online theory and a 25-hour work placement at a local business, coordinated by Sask DLC. You can also participate in an optional one-day Automotive Learning Camp at Saskatchewan Polytechnic, that counts towards the work placement hours.

Mechanical and Automotive A20 (theory with work placement)

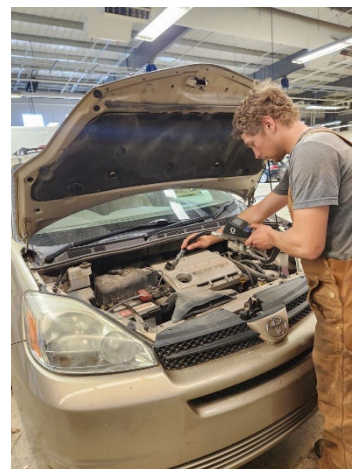
Prerequisite: None. Recommend completing Mechanical and Automotive 10

Grad Pathway Credit: PAA 20 or Elective 20

Course name on official transcript: Mechanical and Automotive A20

Course offered: Asynchronous Semester 1 and 2 or year-long

You will study automotive safety, systems and repair, including vehicle lifts, brakes, hydraulics and diagnostics. This course consists of 50 hours of online theory and a 50-hour work placement at a local business, coordinated by Sask DLC. You can also participate in an optional one-day Automotive Learning Camp at Saskatchewan Polytechnic, that counts towards the work placement hours.



Mechanical and Automotive B20 (theory with work placement)

Prerequisite: None. Recommend completing Mechanical and Automotive 10

Grad Pathway Credit: PAA 20 or Elective 20

Course name on official transcript: Mechanical and Automotive B20

Course offered: Asynchronous Semester 1 and 2 or year-long

This is an intermediate course focusing on batteries, lighting, panels and glass, suspension, radiators and coolants, and exhaust systems. This course consists of 50 hours of online theory and a 50-hour work placement at a local business, coordinated by Sask DLC. You can also participate in an optional one-day Automotive Learning Camp at Saskatchewan Polytechnic, that counts towards the work placement hours.

Mechanical and Automotive A30 (theory with work placement)

Prerequisite: None. Recommend completing Mechanical and Automotive A20

Grad Pathway Credit: PAA 30 or Elective 30

Course name on official transcript: Mechanical and Automotive A30

Course offered: Asynchronous Semester 1 and 2 or year-long

This is an intermediate course focusing on electrical, charging, starting, ignition and fuel systems. It consists of 50 hours of online theory and a 50-hour work placement, coordinated by Sask DLC. You can also participate in an optional one-day Automotive Learning Camp at Saskatchewan Polytechnic, that counts towards the work placement hours.

Mechanical and Automotive B30 (theory with work placement)

Prerequisite: None. Recommend completing Mechanical and Automotive B20

Grad Pathway Credit: PAA 30 or Elective 30

Course name on official transcript: Mechanical and Automotive B30

Course offered: Asynchronous Semester 1 and 2 and year-long

This course focuses on driveshafts, clutches, transmissions, transfer cases and hybrid systems. It consists of 50 hours of online theory and a 50-hour work placement at a local business, coordinated by Sask DLC. You can also participate in an optional one-day Automotive Learning Camp at Saskatchewan Polytechnic, that counts towards the work placement hours.

Mental Wellness 30L

Prerequisite: None

Grad Pathway Credit: Elective 30

Course name on official transcript: Mental Wellness 30L

Course offered: Asynchronous Semester 1 and 2 and year-long

You will develop a deeper understanding of self, relationships, personal agency and informed decision making. Learning to make sense of the world around you, nurturing a healthy self-concept and developing a strong sense of mental wellness is important for everyone.

Paleontology 20L

Prerequisite: None. Recommend completing Science 10

Grad Pathway Credit: Elective 20

Course name on official transcript: Paleontology 20L

Course offered: Asynchronous Semester 1 and 2 or year-long

You will learn about the fascinating creatures both large and small that roamed the earth before humankind and discover how the field of paleontology continues to provide amazing insight into early life on earth.

Parts Technician 30L (theory with work placement)

Prerequisite: None

Grad Pathway Credit: Elective 30

Course name on official transcript: Parts Technician 30L

Course offered: Asynchronous Semester 1 only

You will learn about parts sourcing, pricing, tracking, and shipping as well as the industry and career opportunities available to parts technicians. The course consists of 50 hours of online theory (September to mid-November), 40 to 50 hours of work placement at a local ag equipment dealership (mid-November to end of January) and an optional Learning Camp at Saskatchewan Polytechnic in Saskatoon (typically held in December).



Photography 10

****Note:** This course has been replaced by Digital Content Creation B10 beginning in the 2026-27 school year.

Photography 20

Prerequisite: None

Grad Pathway Credit: PAA 20 or Elective 20

Course name on official transcript: Photography 20

Course offered: Asynchronous Semester 1 and 2 or year-long

You will learn about camera controls and functions, composition, focal length and camera lenses, understanding lighting, image adjustment, image manipulation and career opportunities.

Physical Science 20

Prerequisite: Science 10

Grad Pathway Credit: Science 20 or Elective 20

Course name on official transcript: Physical Science 20

Course offered: Guided Learning Semester 1 and 2; Synchronous Live Class Semester 1 and 2; Asynchronous Semester 1 and 2 or year-long

You'll learn how the combination of chemistry and physics relate to heating, cooling, the foundations of chemistry, chemical reactions and the characteristics of properties of waves.

Physics 30

Prerequisite: Physical Science 20

Grad Pathway Credit: Science 30 or Elective 30

Course name on official transcript: Physics 30

Course offered: Guided Learning Semester 1 and 2; Synchronous Live Class Semester 1 and 2; Asynchronous Semester 1 and 2 or year-long

You will learn how forces and energy shape motion in one and two dimensions, using kinematics, dynamics, work, energy and momentum to analyze real systems. You will also learn about gravitational, electric and magnetic fields.

Work Placement Course Registration Deadlines

Semester 1 courses with work placements - September 30

Year-long courses with work placements - December 11

Semester 2 courses with work placements - February 26

Post-Secondary Readiness 30L

Prerequisite: None

Grad Pathway Credit: Elective 30

Course name on official transcript: Post-Secondary Readiness 30L

Course offered: Asynchronous Semester 1 and 2 or year-long

You will learn about skills and strategies needed to thrive academically, personally and socially. You will explore mental health and stress management, time and project management, digital tools, academic research and writing, exam preparation and collaborative learning – tailored to the general requirements of post-secondary programs. You will also be introduced to key campus resources and support services required to transition confidently into independent post-secondary life.

Power Engineering Class 4 A1 30L

Prerequisite: A complete Grade 10, recommend strong math and science skills. Completion of Class 5 Power Engineering is not required to take Class 4.

Grad Pathway Credit: Elective 30

Course name on official transcript: Power Engineering Class 4 A1 30L

Course offered: Asynchronous Semester 1 and 2 or year-long

The 4th Class Power Engineering Program is recognized by Technical Safety Authority of Saskatchewan (TSASK) and follows the Standardization of Power Engineering Examinations Committee (SOPEEC) curriculum and creates an opportunity for Saskatchewan high school and adult students to complete both the theoretical and hands-on learning training required to be employable in the field of power engineering.

Power Engineering Class 4 A2 30L

Prerequisite: A complete Grade 10, recommend strong math and science skills.

Grad Pathway Credit: Elective 30

Course name on official transcript: Power Engineering Class 4 A2 30L

Course offered: Asynchronous Semester 1 and 2 or year-long

The 4th Class Power Engineering Program creates an opportunity for Saskatchewan high school and adult students to complete the theoretical and hands-on training required to be employable in power engineering.

Power Engineering Class 4 B1 30L

Prerequisite: A complete Grade 10, recommend strong math and science skills.

Grad Pathway Credit: Elective 30

Course name on official transcript: Power Engineering Class 4 B1 30L

Course offered: Asynchronous Semester 1 and 2 or year-long

The 4th Class Power Engineering Program creates an opportunity for Saskatchewan high school and adult students to complete the theoretical and hands-on training required to be employable in power engineering.



Power Engineering Class 4 B2 30L

Prerequisite: A complete Grade 10, recommend strong math and science skills.

Grad Pathway Credit: Elective 30

Course name on official transcript: Power Engineering Class 4 B2 30L

Course offered: Asynchronous Semester 1 and 2 or year-long

The 4th Class Power Engineering Program creates an opportunity for Saskatchewan high school and adult students to complete the theoretical and hands-on training required to be employable in power engineering.

Power Engineering Class 4 Upgrade Part A

Prerequisite: Power Engineering 5th Class Certificate

Grad Pathway Credit: Elective 30

Course name on official transcript: Power Engineering A1 30L and Power Engineering A2 30L

Course offered: Asynchronous Semester 1 and 2 or year-long

You will learn about boiler design and systems, plant instrumentation and controls, concepts in electrotechnology as well as participate in hands-on weekend labs where students will cover topics including micrometers and vernier calipers, valve and pump packing, gasket cutting, twist point drill gauge, gauge glass cutting and installation, and steam boiler operation. Students who have completed Power Engineering Class 5 certification can upgrade their training and prepare for Class 4 certification by completing the Class 4 Part A and Part B Upgrade courses. You will earn two high school credits with this course.

Power Engineering Class 4 Upgrade Part B

Prerequisite: Power Engineering 5th Class Certificate

Grad Pathway Credit: Elective 30

Course name on official transcript: Power Engineering B1 30L and Power Engineering B2 30L

Course offered: Asynchronous Semester 1 and 2 or year-long

Students will learn about lubrication, pumps and compressors, boiler safety services, plant (boiler) operation, power plant/heating plant maintenance, water treatment, primer movers and engines, auxiliary building systems, refrigeration, heating ventilating and air conditioning, heating and cooling systems and types of plants. You will earn two high school credits with this course.

Power Engineering Class 5 20L

Prerequisite: None

Grad Pathway Credit: Elective 30

Course name on official transcript: Introduction to Power Engineering 20L

Course offered: Asynchronous Semester 1 only

****Note: You must be at least 16 years old to take this course. The registration deadline for this course is September 30. There is limited space in this course, registration will be closed once at capacity.**

Power Engineering Class 5 20L will cover boilers, boiler fittings and controls, boiler operations and maintenance, fuels and combustion, piping and valves, thermal and heating systems, human comfort and basic math.

Power Engineering Class 5 30L

Prerequisite: Power Engineering Class 5 20L

Grad Pathway Credit: Elective 30

Course name on official transcript: Introduction to Power Engineering 30L

Course offered: Asynchronous Semester 2 only

****Note: You must be at least 16 years old to take this course. The registration deadline for this course is February 28. There is limited space in this course, registration will be closed once at capacity.**

Power Engineering Class 5 30L covers plumbing and auxiliaries, lighting refrigeration, AC system controls, pumps and air compressors, Provincial Acts, regulation and adopted codes, applied science, safety, electricity, welding and water treatment.

Pre-Calculus 20

Prerequisite: Foundations of Mathematics and Pre-Calculus 10

Grad Pathway Credit: Math 20 or Elective 20

Course name on official transcript: Math: Pre-Calculus 20

Course offered: Guided Learning Semester 1 and 2; Synchronous Live Class Semester 1 and 2; Asynchronous Semester 1 and 2 or year-long

Topics covered include absolute value, radicals, trigonometry, rational expressions and equations, factoring, quadratic functions, quadratic equations, linear and quadratic inequalities, sequences and series, and reciprocal functions.

Pre-Calculus 30

Prerequisite: Pre-Calculus 20

Grad Pathway Credit: Math 30 or Elective 30

Course name on official transcript: Math: Pre-Calculus 30

Course offered: Guided Learning Semester 1 and 2; Synchronous Live Class Semester 1 and 2; Asynchronous Semester 1 and 2 or year-long

This course is intended for students continuing their study in high-level mathematics. You will learn about graphing functions such as polynomial, radical, trigonometric, logarithm, exponential and rational functions. You will also dive into some advanced trigonometry including unit circles, secondary trig ratios and identities.

Precision Agriculture 30L (theory with work placement)

Prerequisite: None

Grad Pathway Credit: Elective 30

Course name on official transcript: Precision Agriculture 30L

Course offered: Asynchronous Semester 2 only

You will learn the basics of precision agriculture and discover how variable rate mapping, artificial intelligence and digital imagery help guide farm management decisions to improve the sustainability, efficiency and productivity of agricultural operations. This course consists of 50 hours of online theory and a 50-hour work placement, coordinated by Sask DLC, at a local agriculture dealership.

Psychology 20

Prerequisite: None

Grad Pathway Credit: Social Science 20 or Elective 20

Course name on official transcript: Psychology 20

Course offered: Asynchronous Semester 1 and 2 or year-long

****Note: This course meets the Social Science 20/30 requirement for a Regular (old) graduation Plan. For students on a SK Regular (new) graduation plan it is an Elective 30.**

You will explore key psychological perspectives that seek to explain human behaviour – including its physical, emotional, mental, and spiritual dimensions. You will also examine the scientific methods used to study people and gain insight into mental health, the factors that shape behaviour and the influences that guide human thought and action. This course will give you a deeper understanding of human behaviour and what it means to be human.

Psychology 30

Prerequisite: None

Grad Pathway Credit: Social Science 30 or Elective 30

Course name on official transcript: Psychology 30

Course offered: Asynchronous Semester 1 and 2 or year-long

****Note: This course meets the Social Science 20/30 requirement for a Regular (old) Graduation Plan. For students on a SK Regular (new) graduation plan it is an Elective 30.**

You will study human development across the lifespan, beginning with conception and continuing through gestation, infancy and early childhood. You will deepen your understanding of the scientific nature of psychology and explore major themes such as the nature-versus-nurture debate. This course examines physical, cognitive, and emotional changes, as well as the various social influences that shape human development.

Science 10

Prerequisite: None

Grad Pathway Credit: Science 10

Course name on official transcript: Science 10

Course offered: Guided Learning Semester 1 and 2; Synchronous Live Class Semester 1 and 2; Asynchronous Semester 1 and 2 or year-long

You will strengthen your knowledge of atoms and elements while using those principles in chemical reactions. You will explore climate and ecosystems, biogeochemical cycles that impact our world and the biomes around us as well as examine the forces that act on objects and how they affect their motions.

Sport Psychology 20L

Prerequisite: None

Grad Pathway Credit: Elective 20

Course name on official transcript: Sport Psychology 20L

Course offered: Asynchronous Semester 1 and 2 or year-long

You will delve into the fascinating world of sports psychology, exploring the intricate relationship between the mind and athletic performance. You will investigate the history of sports psychology, the impact of psychological factors like motivation and stress on performance, and the importance of relationships in sport.

Tourism 10 (theory only)

Prerequisite: None

Grad Pathway Credit: PAA 10 or Elective 10

Course name on official transcript: Tourism 10

Course offered: Asynchronous Semester 1 and 2 or year-long

You will be introduced to the five sectors within the tourism industry (food and beverage, accommodation, recreation and entertainment, transportation, and travel services), highlighting their impact on local communities and our province. Emphasis is placed on sustainable practices, quality customer service and professionalism, laying the groundwork for further exploration in Tourism 20 and 30 with work placement courses. You can also participate in an optional one-day *Think Tourism* event hosted by Tourism Saskatchewan.

Tourism 20 (theory with work placement)

Prerequisite: None

Grad Pathway Credit: PAA 20 or Elective 20

Course name on official transcript: Tourism 20

Course offered: Asynchronous Semester 2 only

You will explore Canadian tourism in-depth, focusing on the five tourism sectors. You will learn about quality customer service, career pathways, tourism marketing, and meeting the needs of all clients. This course consists of 50 hours of online theory and a 50-hour work placement at a tourism business, coordinated by Sask DLC, where you will get hands-on learning opportunities to practice what you have learned. You can also participate in an optional one-day *Think Tourism* event hosted by Tourism Saskatchewan, that would count towards the work placement hours.



Work Placement Course Registration Deadlines

Semester 1 courses with work placements - September 30

Year-long courses with work placements - December 11

Semester 2 courses with work placements - February 26

Tourism 30 (theory with work placement)

Prerequisite: None

Grad Pathway Credit: PAA 30 or Elective 30

Course name on official transcript: Tourism 30

Course offered: Asynchronous Semester 2 only

You will learn about safety, marketing, frontline service, customer service recovery and careers and entrepreneurship. You will complete a 50-hour work placement, coordinated by Sask DLC, and have the chance to participate in an optional one-day *Think Tourism* event hosted by Tourism Saskatchewan, that would count towards the work placement hours.

Visual Art 10

Prerequisite: None

Grad Pathway Credit: Fine Arts 10 or Elective 10

Course name on official transcript: Visual Art 10

Course offered: Asynchronous Semester 1 and 2 or year-long

You will investigate the content and aesthetics of the arts within cultural, historical, and contemporary contexts and understand the connection between the arts and the human experience. You will also explore techniques in drawing, image-making, collage, sculpture and painting.

Visual Art 20

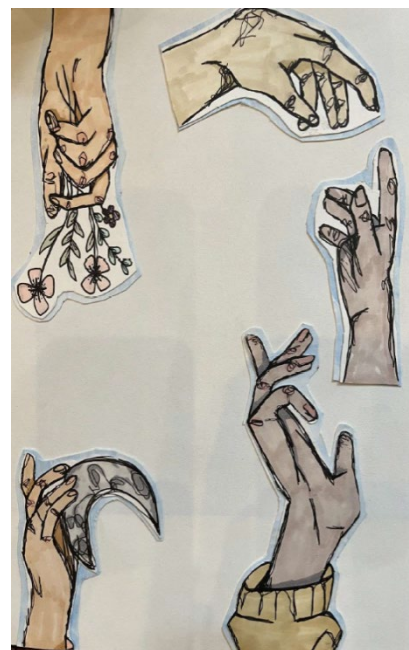
Prerequisite: None. Recommend completing Visual Art 10

Grad Pathway Credit: Fine Arts 20 or Elective 20

Course name on official transcript: Visual Art 20

Course offered: Asynchronous Semester 1 and 2 or year-long

You will experiment with a variety of different art practices to explore ideas derived from various sources of inspiration including perspectives of Indigenous people in Saskatchewan and diverse worldviews.



Visual Art 30

Prerequisite: None. Recommend completing Visual Art 20

Grad Pathway Credit: Fine Arts 30 or Elective 30

Course name on official transcript: Visual Art 30

Course offered: Asynchronous Semester 1 and 2 or year-long

You will build upon their diverse artistic style by using familiar and unfamiliar art-making processes and techniques inspired by Canadian artists.

Welding 10 (theory only)

Prerequisite: None

Grad Pathway Credit: PAA 10 or Elective 10

Course name on official transcript: Welding 10

Course offered: Asynchronous Semester 1 and 2 or year-long

You will be introduced to the basic skills needed in the welding industry and will study various hand and power tools, welding and cutting techniques and career opportunities within the field. Personal and workplace safety is an emphasis throughout the course.

Welding 20 (theory with work placement)

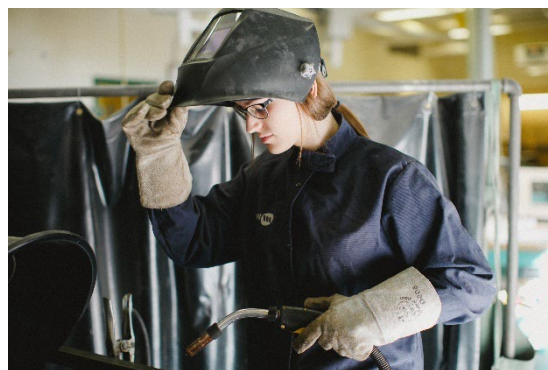
Prerequisite: None. Recommend completing Welding 10

Grad Pathway Credit: PAA 20 or Elective 20

Course name on official transcript: Welding 20

****Note: Occupational safety regulations require students to be at least 16 years old to take this course.**

Course offered: Asynchronous Semester 1 and 2 or year-long
You will learn about proper and safe use of power tools, iron and steel production, plasma arc, shielded metal arc and gas metal arc welding. The course consists of 50 hours of online theory and a 50-hour work placement at a local business, coordinated by Sask DLC.



Wellness 10

Prerequisite: None

Grad Pathway Credit: Physical Education 10

Course name on official transcript: Wellness 10

Course offered: Asynchronous Semester 1 and 2 or year-long

This course is a combination of health and physical education, focusing on creating and revising a personal plan for wellness. It aims to develop confident, capable students who value and maintain a balanced, healthy lifestyle. You will learn about self-awareness, self-management, safety, physical fitness, mental wellness and healthy eating. This course requires you to take part in approximately 70 days of activity, including tracking your movement, resistance and cardio training and volunteering hours.

Wildlife and Habitat Studies 10

Prerequisite: None

Grad Pathway Credit: PAA 10

Course name on official transcript: Wildlife and Habitat Studies 10

Course offered: Asynchronous Semester 1 and 2 or year-long

You will explore the basics of wildlife and habitat management and examine the relationship between humans and wildlife, safe and sustainable practices for outdoor activities and providing opportunities for land-based learning.

Wildlife and Habitat Studies 20

Prerequisite: None

Grad Pathway Credit: PAA 20

Course name on official transcript: Wildlife and Habitat Studies 20

Course offered: Asynchronous Semester 1 and 2 or year-long

You will learn outdoor skills for safe, sustainable activities like camping, fishing, hunting, and trapping. Through outdoor excursions and online learning, you will explore wildlife management basics and related career opportunities.

Work Placement Course Registration Deadlines

Semester 1 courses with work placements - September 30

Year-long courses with work placements - December 11

Semester 2 courses with work placements - February 26

Workplace and Apprenticeship Mathematics 10

Prerequisite: None

Grad Pathway Credit: Math 10 or Elective 10

Course name on official transcript: Math: Workplace and Apprenticeship 10

Course offered: Guided Learning Semester 1 and 2; Synchronous Live Class Semester 1 and 2; Asynchronous Semester 1 and 2 or year-long

This course focuses on the application of mathematical concepts and skills to real-world contexts, enabling you to make connections between what you learn at school to what you will use in the workplace. This course may be suitable for students who plan to enter a trade, pursue post-secondary studies at a college or enter the workforce directly after high school graduation.

Workplace and Apprenticeship Mathematics 20

Prerequisite: Workplace and Apprenticeship Mathematics 10

Grad Pathway Credit: Math 20 or Elective 20

Course name on official transcript: Math: Workplace and Apprenticeship 20

Course offered: Guided Learning Semester 1 and 2; Synchronous Live Class Semester 1 and 2; Asynchronous Semester 1 and 2 or year-long

You will learn about trigonometry, three-dimensional objects, graphic and financial math. This course may be suitable for students who plan to enter a trade, pursue post-secondary studies at a college or enter the workforce directly after high school graduation.

Workplace and Apprenticeship Mathematics 30

Prerequisite: Workplace Apprenticeship Mathematics 20

Grad Pathway Credit: Math 30 or Elective 30

Course name on official transcript: Math: Workplace and Apprenticeship 30

Course offered: Guided Learning Semester 1 and 2; Asynchronous Semester 1 and 2 or year-long

You will develop practical mathematical skills and problem-solving strategies for real-world applications in trades and workplace settings. Topics include measurement, geometry, trigonometry, financial mathematics, statistics, and problem-solving in trade-related contexts.

The Workplace and Apprenticeship Mathematics pathway is designed to provide the mathematical knowledge and critical-thinking skills needed for students intending to pursue careers in the trades and general workplaces.

French Immersion / Cours de langue française

Students need to have been previously registered in French Immersion programming to register in these courses.

The 12 courses necessary for bilingual mention must include three French language arts courses (Français Immersion 10, 20, 30). The other nine credits can be obtained from courses in the remaining areas of study or electives that are taught in French.

Études alimentaires 10

Prerequisite: None

Grad Pathway Credit: PAA 10 or Elective 10

Course name on official transcript: Études alimentaires 10

Course offered: Asynchronous Semester 1 and 2 or year-long

You will develop foundational skills in safety, nutrition and cooking. This course covers topics such as Canada's Food Guide, kitchen safety, common foods, basic nutrition, recipe preparation and careers in food.

Études alimentaires 20

Prerequisite: None. Recommend completing Études alimentaires 10

Grad Pathway Credit: PAA 20 or Elective 20

Course name on official transcript: Études alimentaires 20

Course offered: Asynchronous Semester 1 and 2 or year-long

You will apply techniques to prepare more complex recipes. Students will also begin to explore food-related topics such as food safety, cultural food practices and food preservation.

Études alimentaires 30

Prerequisite: None. Recommend completing Études alimentaires 20

Grad Pathway Credit: PAA 30 or Elective 30

Course name on official transcript: Études alimentaires 30

Course offered: Asynchronous Semester 1 and 2 or year-long

You will have the opportunity to deepen your understanding and skills in food preparation, nutrition and food systems.

Français immersion 10

Prerequisite: None

Grad Pathway Credit: Français immersion 10 or Elective 10

Course name on official transcript: Français immersion 10

Course offered: Asynchronous Semester 1 and 2 or year-long

You will develop both written and spoken language skills through written and oral work. This course focuses on five key areas: appreciation of Francophone language and culture, listening comprehension, reading comprehension, oral communication and written communication.

Français immersion 20

Prerequisite: Français immersion 10

Grad Pathway Credit: Français immersion 20 or Elective 20

Course name on official transcript: Français immersion 20

Course offered: Asynchronous Semester 1 and 2 or year-long

This course builds upon Français immersion 10, enhancing your interest in written and spoken language while developing the skills needed to understand and produce written and oral messages. There is an exploration of French culture including film and music.

Français immersion 30

Prerequisite: Français immersion 20

Grad Pathway Credit: Français immersion 30 or Elective 30

Course name on official transcript: Français immersion 30

Course offered: Asynchronous Semester 1 and 2 or year-long

This course builds upon Français immersion 20, enhancing your interest in written and spoken language while developing the ability to understand and produce both written and oral messages. There is a broader exploration of French culture, including theatre, documentary films, and poetry.

Français immersion intégré A20

Prerequisite: None

Grad Pathway Credit: PAA 20 or Elective 20

Course name on official transcript: Français immersion intégré A20

Course offered: Asynchronous Semester 1 and 2 or year-long

You will explore *Le cinéma et la culture française* and *La société et le changement*. The study of language is integrated with the French Language Arts programs – Français 20/30. It is recommended that you take Français immersion intégré A20 in your Grade 11 year.

Français immersion intégré B20

Prerequisite: None

Grad Pathway Credit: PAA 20 or Elective 20

Course name on official transcript: Français immersion intégré B20

Course offered: Asynchronous Semester 1 and 2 or year-long

You will explore *La sensibilisation médiatique* and *L'innovation et l'entrepreneuriat*. The study of language is integrated with the French Language Arts programs Français 20/30. It is recommended that you take Français immersion intégré B20 in your Grade 12 year.

Histoire 10

Prerequisite: None

Grad Pathway Credit: Social Science 10 or Elective 10

Course name on official transcript: Histoire 10

Course offered: Asynchronous Semester 1 and 2 or year-long

****Note: This is equivalent to History 10/Indigenous or Native Studies 10/Social Studies 10**

You will develop understanding of the basic institutions of industrialized democratic societies. The program examines a variety of societies around the world so that students can compare the organization of society in Saskatchewan with that of other societies. The past is used to show students how basic social organizations developed in the late 18th and 19th centuries.

Histoire 20

Prerequisite: None

Grad Pathway Credit: Social Science 20 or Elective 20

Course name on official transcript: Histoire 20

Course offered: Asynchronous Semester 1 and 2 or year-long

****Note: This is equivalent to History 20/ Indigenous or Native Studies 20/Social Studies 20**

You will develop an understanding of the compelling issues facing the world. The program explores issues such as human rights, world population, growth, the environment, and world peace, as well as the conditions, ideas, and events of the 20th century that gave rise to these issues. It discusses the current state of these issues and ways to address them.

Littératie financière 10

Prerequisite: None

Grad Pathway Credit: Littératie financière 10 or Elective 10

Course name on official transcript: Littératie financière 10

Course offered: Asynchronous Semester 1 and 2 or year-long

You will develop the skills and knowledge to help make responsible financial decisions, so that you are prepared and feel empowered to make informed decisions. You will have the opportunity to discover how financial literacy, education, career, family and lifestyle choices are all interrelated in your lives and future planning. This course focuses on critical thinking and overall financial well-being, through topics including earning, saving, investing, spending, borrowing, sharing and protecting.

Sciences sociales 30

Prerequisite: None

Grad Pathway Credit: Social Science 30 or Elective 30

Course name on official transcript: Sciences sociales 30

Course offered: Asynchronous Semester 1 and 2 or year-long

****Note: This is equivalent to History 30/ Indigenous or Native Studies 30/Social Studies 30**

You will develop an understanding of the critical issues facing Canadians at the start of the 21st century. This course examines issues such as change in Canadian society throughout the country's history, the relationship between the country and its people, the relationship between various cultures, the exercise of power and government in Canadian society and Canada's relations with the global community.

Tourisme 10

Prerequisite: None

Grad Pathway Credit: PAA 10 or Elective 10

Course name on official transcript: Tourisme 10

Course offered: Asynchronous Semester 1 and 2 or year-long

You will be introduced to five key industries of the tourism sector -- food and beverage, accommodation, recreation and entertainment, transportation and travel services. This course examines tourism's impact on local communities and the province while the importance of sustainable, quality customer service and professionalism.

Tourisme 20

Prerequisite: None

Grad Pathway Credit: PAA 20 or Elective 20

Course name on official transcript: Tourisme 20

Course offered: Asynchronous Semester 1 and 2 or year-long

You will gain an overview of the planning, organization and managing tourism events, along with resource and service management and the promotion of tourism across the Americas and globally.

Specialized Program Credits

Registration is available to full-time online Sask DLC students. Part-time online students can access these options through their local schools.

Driver Education

Prerequisite: Must be at least 15 years old when the class starts and registered full-time with Sask DLC.

Grad Pathway Credit: N/A (This is a non-credit course)

Course name on official transcript: Driver Education 10

Course offered: Synchronous Live Class

Sask DLC offers Driver Education multiple times per year. You will receive 30 hours of live, online instruction and six hours of practice driving with a certified SGI-approved driving instructor in your area. If you have already turned 16, you have the option to pay for private lessons directly with a driving school, which includes six hours of in-class instruction and six hours of practice driving.

Lifeguard 30L

Prerequisite: None

Grad Pathway Credit: Elective 30

Course name on official transcript: Lifeguard (DC) 30L

Course offered: Upon completion of certificate

In recognition of your certification with the Lifesaving Society, a Lifeguard 30L credit is available. Submit your certificate noting completion of the lifesaving training to your academic advisor and they will work with the Ministry of Education to have the credit added to your transcript.

Royal Conservatory of Music 10, 20 or 30

Prerequisite: None

Grad Pathway Credit: Elective 10, 20 or 30

Course name on official transcript: Royal Conservatory of Music 10, 20 or 30

Course offered: Upon completion of certificate

If you are working towards your RCM Certificates you may be eligible to receive one credit in each of Grades 10, 11 and 12. These are listed as Royal Conservatory of Music credits and will appear on your Ministry of Education high school transcript as standing granted.

Special Project Credit 10, 20 or 30

Prerequisite: None

Grad Pathway Credit: Elective 10, 20 or 30

Course name on official transcript: Special Project 10, 20 or 30

Course offered: Asynchronous Semester 1 and 2 or year-long

The Special Project Credit course reflects learning and skill development that occur in a learner's life through a multitude of programs and experiences (i.e. clubs, sports, training). This unique credit is individualized and designed by the student and overseen by a qualified project mentor (typically a coach or instructor) and a designated teacher mentor. Students must submit their Special Project Credit proposal and have it approved by Sask DLC before beginning this course.

Volunteerism 30

Prerequisite: None

Grad Pathway Credit: Elective 30

Course name on official transcript: Volunteerism 30

Course offered: volunteer hours may be accumulated over multiple school years

The Volunteerism 30 credit recognizes and reflects your learning through community service activities that may take place in a variety of settings, including businesses, not-for-profit organizations, public sector institutions (including hospitals and long-term care facilities) and informal settings. You are required to complete a minimum of 100 hours of volunteer time for one or more community service activities throughout grades 10 to 12.

Students must submit a proposal and have it approved by Sask DLC before beginning this course.

English as an Additional Language (EAL)

English as an Additional Language (EAL) courses are available to speakers of other languages who require appropriate levels of English to access provincial curricula. Before registering in these courses, it is important that school or division personnel determine the student's Common Framework of Reference (CFR) level and choose the EAL course that is recommended for their language proficiency.

****Note:** These courses are available to full-and part-time online Sask DLC students. All EAL courses are delivered synchronously. There is limited space in these courses and registration will be closed once at capacity.

English as an Additional Language (EAL) A10L

Prerequisite: None

Grad Pathway Credit: Elective 10

Course name on official transcript: English as an Additional Language A10L

Course offered: Synchronous Live Class Semester 1 and 2

This course supports high school students who are beginning to develop their English language proficiency. This course focuses on foundational skills in listening, speaking, reading and writing to support success in school and everyday communication. You will develop your basic English skills in the areas of listening, speaking, reading and writing. You will participate in class and gain confidence in using English in common areas of communication such as school, community, self and family.

This course is intended for students with CFR A1.1 descriptors and may also support students with limited or interrupted formal schooling.

English as an Additional Language (EAL) B10L

Prerequisite: None

Grad Pathway Credit: Elective 10

Course name on official transcript: English as an Additional Language B10L

Course offered: Synchronous Live Class Semester 1 and 2

This course support high school students to build their basic English language proficiency. This course focuses on skills in listening, speaking, reading and writing to support academic success and everyday communication. English language learners will gain confidence and competence in their use of English.

This course is intended for students with CFR A1.1-A1.2 descriptors.

English as an Additional Language (EAL) A20L

Prerequisite: None

Grad Pathway Credit: Elective 20

Course name on official transcript: English as an Additional Language A20L

Course offered: Synchronous Live Class Semester 1 and 2

This course supports high school students to build their intermediate English language proficiency. This course focuses on skills in listening, speaking, reading and writing to support academic success and everyday communication. English language learners will gain confidence and competence in their use of English.

This course is intended for students with CFR A2.1-A2.2 descriptors.

English as an Additional Language (EAL) B20L

Prerequisite: None

Grad Pathway Credit: Elective 20

Course name on official transcript: English as an Additional Language B20L

Course offered: Synchronous Live Class Semester 1 and 2

This course supports high school students with intermediate or advanced English language proficiency. This course focuses on skills in listening, speaking, reading and writing to support academic success including extending and applying vocabulary and grammar. Students will gain confidence and competence in their use of English.

This course is intended for students with CFR A2.2-B1.1 descriptors.

Modified Courses

Modified courses are specialized courses that require signed parent consent before registering a student up to the age of 18, due to the potential impact on post-secondary options. Students over the age of 18 may sign consent for themselves.

To register for a modified course, full-time online Sask DLC students can contact their Academic Advisor and part-time online students should get their school to contact their local Sask DLC Campus Principal. Students may not earn credit in both a regular (core) course and its credit equivalent modified course.

English Language Arts 11 (ELA 11 or ELA A11)

Prerequisite: None

Grad Pathway Credit: ELA 11

Course name on official transcript: English Language Arts A11 (4102)

Course offered: Synchronous Live Class Semester 1

****Note:** This course meets the 10-level ELA requirement for a SK Regular (new) graduation plan. Students on a Regular (old) graduation plan who require ELA A10 (4017), ELA B10 (4018), or ELA B11 (4103) should contact Helpdesk for more information (helpdesk@saskDLC.ca). Credit may not be earned for both ELA A10 and ELA A11 or ELA 10 and ELA B11 or ELA B10 and ELA B11 or ELA 10 and ELA B10.

This course explores life's challenges and mysteries, considering how stories, decisions and our experiences shape our understanding of the world. Students will examine the complexities of human existence, while considering how we seek answers through different ways of knowing.

English Language Arts 21 (ELA 21)

Prerequisite: ELA 10 or 11

Grad Pathway Credit: ELA 21

Course name on official transcript: English Language Arts 21 (6102)

Course offered: Synchronous Live Class Semester 2

****Note:** This course meets the 20-level ELA requirement for students on the Regular (old) and SK Regular (new) graduation plans.

This course examines the journey through childhood, youth, and adulthood, exploring key life transitions, challenges and milestones that shape identity and personal growth. Through literature and various texts, students will analyze the evolving roles, relationships and aspirations that define the paths individuals take in life.

English Language Arts A31 (ELA A31)

Prerequisite: ELA 20 or 21

Grad Pathway Credit: ELA A31

Course name on official transcript: English Language Arts A31 (8102)

Course offered: Synchronous Live Class Semester 1

****Note:** This course meets the 30-level ELA requirement for a SK Regular (new) graduation plan. Students on a Regular (old) graduation plan who require ELA A30 (8017), ELA B30 (8018), or ELA B31 (8103) should contact Helpdesk for more information (helpdesk@saskDLC.ca). Credit may not be earned for both ELA A30 and ELA A31 or ELA 30 and ELA B31 or ELA B30 and ELA B31 or ELA 30 and ELA B30.

This course explores what it means to be Canadian by examining our diverse identities, values and the landscapes that shape us, both physically and culturally. Through literature and other forms of media, students will reflect on how Canada's history, geography and diverse perspectives influence our nation and its people.

English Language Arts B31 (ELA B31)

Prerequisite: ELA 20 or 21

Grad Pathway Credit: ELA B31

Course name on official transcript: English Language Arts B31 (8103)

Course offered: Synchronous Live Class Semester 2

****Note:** For students who began Grade 10 after September 2024 (SK Regular grad plan), you can choose either ELA A31 or ELA B31 to meet your ELA 31 requirement. Students who began Grade 10 prior to September 2024 (Regular grad plan), continue to need both ELA A31 and ELA B31 to graduate.

This course explores the journey of discovering who we are and our place in society, focusing on themes such as identity, ambition, power and social responsibility. Through the examination of literary and informational texts, students will think critically about the challenges of balancing personal goals with the needs and values of the community.

Environmental Science 21

Prerequisite: Science 10

Grad Pathway Credit: Science 21

Course name on official transcript: Environmental Science 21

Course offered: Synchronous Live Class Semester 2; Asynchronous Semester 1 and 2 or year-long

You will explore how local and global water and soil health, air quality, waste management and habitat protection impact your community and the world. You will build an understanding of sustainable practices and environmental stewardship, with a focus on practical, accessible approaches through scientific and Indigenous perspectives.

Financial Literacy 11

Prerequisite: None

Grad Pathway Credit: Financial Literacy 11

Course name on official transcript: Financial Literacy 11

Course offered: Synchronous Live Class Semester 1 and 2; Asynchronous Semester 1 and 2 or year-long

You will learn how personal experiences shape financial decisions, examine how money choices affect well-being and learn to use common financial services. You will study income, budgeting, saving, basic investments, credit and financial security. By the end, you will be able to develop a financial plan that connects finances with your education, career, wellness and future goals.

Indigenous Studies 11 (formerly Native Studies)

Prerequisite: None

Grad Pathway Credit: Social Science 11 or Elective 10

Course name on official transcript: Native Studies 11

Course offered: Synchronous Live Class Semester 2

You will learn about the land and people of Turtle Island (North America) before and after European contact, with a focus on the vital role of Indigenous peoples in Saskatchewan's history. The course explores the diverse First Nations, Inuit and Métis perspectives on identity, community, governance, treaties and economies.

Indigenous Studies 31 (formerly Native Studies)

Prerequisite: None

Grad Pathway Credit: Social Science 31 or Elective 30

Course name on official transcript: Native Studies 31

Course offered: Synchronous Live Class Semester 2

You will dig deeply into Canada's history, focusing on the story of Indigenous peoples. You will explore Canada's inconvenient truths around nation-building, social stereotypes and the prevalent myths concerning Indigenous peoples.

Mathematics 11

Prerequisite: None

Grad Pathway Credit: Mathematics 11

Course name on official transcript: Mathematics 11

Course offered: Synchronous Live Class Semester 1 and Asynchronous Semester 1 and 2 or year-long

In this course, emphasis is placed on making informed decisions about finances, home design and maintenance, personal recreation and wellness, travel and transportation. You will draw on your own or other's experiences in the workforce to develop and extend knowledge about earning and spending money.

Mathematics 21

Prerequisite: Mathematics 11, Foundations and Pre-Calculus 10, and/or Workplace and Apprenticeship 10

Grad Pathway Credit: Mathematics 21

Course name on official transcript: Mathematics 21

Course offered: Synchronous Live Class Semester 1 and Asynchronous Semester 1 and 2 or year-long

You will apply principles of probability, logical reasoning, and problem-solving skills to make predictions and decisions in recreational and wellness activities. You will also investigate and solve problems involving estimation, proportional reasoning, data analysis and metric conversions to plan a trip.

Science 11

Prerequisite: None

Grad Pathway Credit: Science 11

Course name on official transcript: Science 11

Course offered: Synchronous Live Class Semester 2 and Asynchronous Semester 1 and 2 or year-long

You will strengthen your knowledge of atoms and elements while using those principles in chemical reactions. You will explore climate and ecosystems, biogeochemical cycles that impact our world and the biomes around us as well as examine the forces that act on objects and how they affect their motions.

If you are interested, so are we!

If you have any questions about our courses, visit our website at saskdlc.ca or contact our main office at 306-252-1000, toll-free at 1-844-515-3276 or email helpdesk@saskDLC.ca.

2026-27 Synchronous Live Class Schedule

Period	Semester 1	Semester 2
Period 1 9 a.m.	ELA 10 ELA 11 Workplace and Apprenticeship Math 20 Physical Science 20 Pre-Calculus 30 English as an Additional Language A10L	ELA 10 Environmental Science 21 Pre-Calculus 20 Pre-Calculus 30 Physics 30 English as an Additional Language A10L
Period 2 10 a.m.	Science 10 ELA 20 Foundations of Mathematics 20 Foundations of Mathematics 30 Chemistry 30 English as an Additional Language B10L	History 10 Indigenous Studies 11 Workplace and Apprenticeship Math 20 Health Science 20 Calculus 30 Biology 30 English as an Additional Language B10L
Period 3 11 a.m.	Foundations Math and Pre-Calculus 10 Workplace and Apprenticeship Math 10 Mathematics 11 Environmental Science 20 Pre-Calculus 20 ELA A30 English as an Additional Language A20L	Foundations Math and Pre-Calculus 10 Workplace and Apprenticeship Math 10 Environmental Science 20 Chemistry 30 Physics 30 History 30 Indigenous Studies 31 English as an Additional Language A20L
Period 4 1 p.m.	History 10 Health Science 20 Mathematics 21 Foundations of Mathematics 30 Pre-Calculus 30 English as an Additional Language B20L	Financial Literacy 10 Financial Literacy 11 Physical Science 20 Foundations of Mathematics 30 Chemistry 30 ELA B31 English as an Additional Language B20L
Period 5 2:10 p.m.	Financial Literacy 10 Financial Literacy 11 Foundations of Mathematics 20 Biology 30 Physics 30 ELA A31	Science 10 Science 11 Foundations of Mathematics 20 ELA 21 ELA B30

